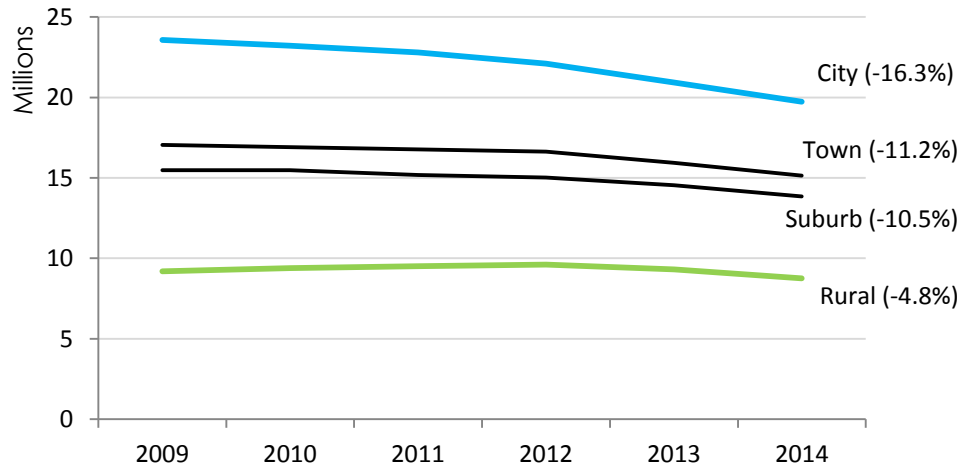


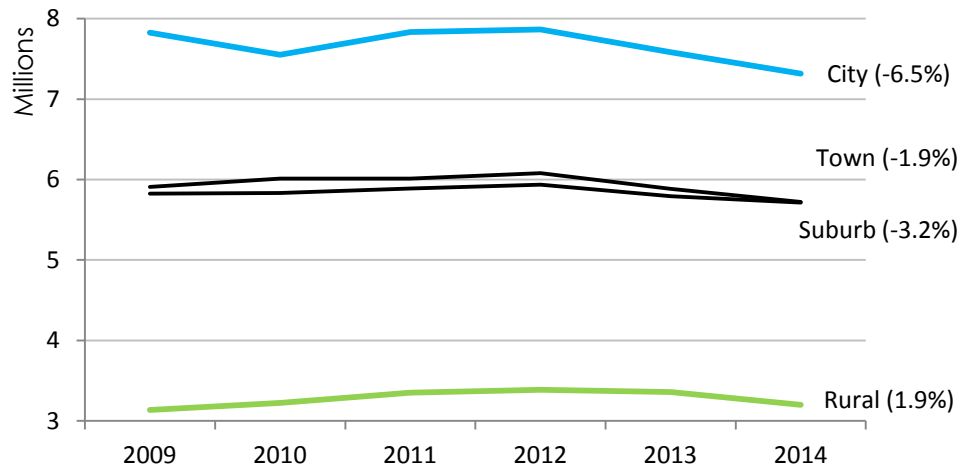
Circulation of Material by Library Locale

Total Circulation



Locale	2009	2010	2011	2012	2013	2014	Percent Change	
							2009-14	2013-14
City	23,563,286	23,218,854	22,800,197	22,100,926	20,931,111	19,727,187	-16.3%	-5.8%
Suburb	15,469,613	15,468,765	15,171,278	15,021,492	14,536,131	13,838,309	-10.5%	-4.8%
Town	17,044,517	16,916,428	16,777,539	16,637,306	15,940,906	15,134,702	-11.2%	-5.1%
Rural	9,191,491	9,396,987	9,515,451	9,604,487	9,313,997	8,754,307	-4.8%	-6.0%
Statewide	65,268,907	65,001,034	64,264,465	63,364,211	60,722,145	57,454,505	-12.0%	-5.4%

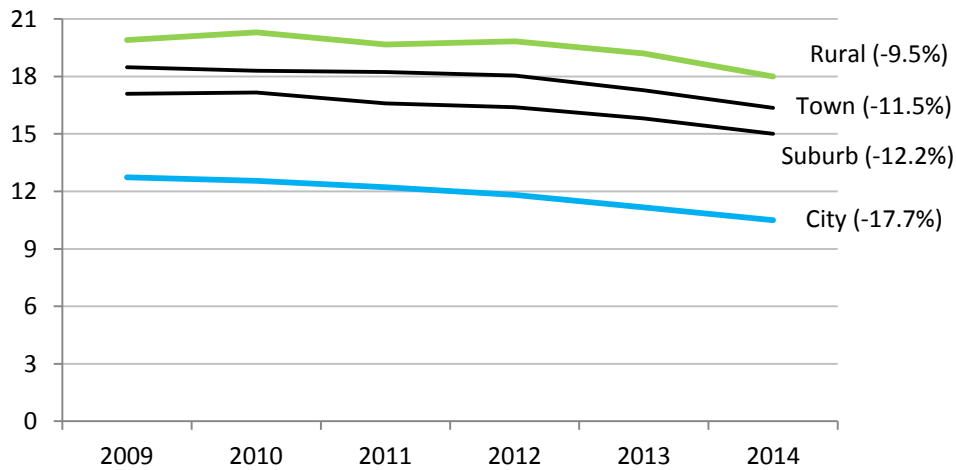
Circulation of Children's Material



Locale	2009	2010	2011	2012	2013	2014	Percent Change	
							2009-14	2013-14
City	7,827,531	7,552,115	7,832,314	7,866,063	7,581,618	7,317,633	-6.5%	-3.5%
Suburb	5,908,540	6,010,569	6,012,961	6,078,955	5,882,805	5,721,197	-3.2%	-2.7%
Town	5,823,884	5,834,104	5,889,785	5,938,194	5,793,820	5,715,442	-1.9%	-1.4%
Rural	3,137,996	3,225,473	3,352,534	3,388,515	3,360,609	3,197,935	1.9%	-4.8%
Statewide	22,697,951	22,622,261	23,087,594	23,271,727	22,618,852	21,952,207	-3.3%	-2.9%

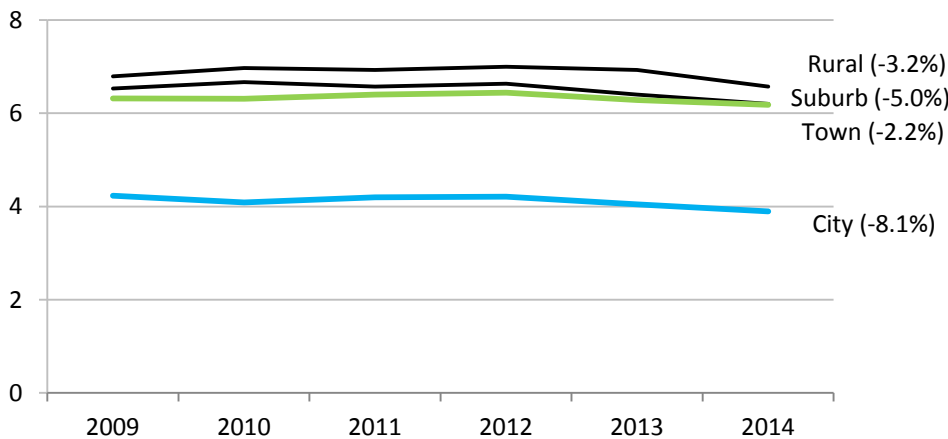
Circulation of Material per Resident by Library Locale

Total Circulation per Resident by Library Locale



Locale	2009	2010	2011	2012	2013	2014	Percent Change	
							2009-14	2013-14
City	12.7	12.6	12.2	11.8	11.2	10.5	-17.7%	-6.0%
Suburb	17.1	17.2	16.6	16.4	15.8	15.0	-12.2%	-5.1%
Town	18.5	18.3	18.2	18.0	17.3	16.4	-11.5%	-5.3%
Rural	19.9	20.3	19.7	19.8	19.2	18.0	-9.5%	-6.3%
Statewide	15.8	15.7	15.4	15.1	14.4	13.6	-13.6%	-5.6%

Circulation of Children's Material per Resident



Locale	2009	2010	2011	2012	2013	2014	Percent Change	
							2009-14	2013-14
City	4.2	4.1	4.2	4.2	4.0	3.9	-8.1%	-3.7%
Suburb	6.5	6.7	6.6	6.6	6.4	6.2	-5.0%	-3.0%
Town	6.3	6.3	6.4	6.4	6.3	6.2	-2.2%	-1.6%
Rural	6.8	7.0	6.9	7.0	6.9	6.6	-3.2%	-5.1%
Statewide	5.5	5.5	5.5	5.6	5.4	5.2	-5.0%	-3.2%

Libraries with Increased Circulation by Library Locale

Total Circulation

Locale	2009	2010	2011	2012	2013	2014
City	13	8	8	3	1	0
Suburb	42	23	12	16	9	6
Town	82	45	40	37	26	12
Rural	168	130	104	91	68	44
Statewide	305	206	164	147	104	62
City	81.3%	50.0%	50.0%	18.8%	6.3%	0.0%
Suburb	91.3%	50.0%	26.1%	34.8%	19.6%	13.0%
Town	83.7%	45.9%	40.8%	37.8%	26.5%	12.2%
Rural	75.6%	58.4%	46.6%	41.2%	30.8%	19.9%
Statewide	80.1%	54.1%	42.9%	38.5%	27.3%	16.3%

Children's Materials

Locale	2009	2010	2011	2012	2013	2014
City	11	7	9	7	2	3
Suburb	31	27	19	20	12	14
Town	57	51	46	52	38	35
Rural	125	126	117	91	95	76
Statewide	224	211	191	170	147	128
City	68.8%	43.8%	56.3%	43.8%	12.5%	18.8%
Suburb	67.4%	58.7%	41.3%	43.5%	26.1%	30.4%
Town	58.2%	52.0%	46.9%	53.1%	38.8%	35.7%
Rural	56.1%	56.6%	52.5%	41.2%	43.0%	34.4%
Statewide	58.8%	55.4%	50.0%	44.5%	38.6%	33.6%

Children's Material Percentage of Total Circulation

Locale	2009	2010	2011	2012	2013	2014
City	33.2%	32.5%	34.4%	35.6%	36.2%	37.1%
Suburb	38.2%	38.9%	39.6%	40.5%	40.5%	41.3%
Town	34.2%	34.5%	35.1%	35.7%	36.3%	37.8%
Rural	34.1%	34.3%	35.2%	35.3%	36.1%	36.5%
Statewide	34.8%	34.8%	35.9%	36.7%	37.2%	38.2%